



Smart Laser  
Marking



High Speed  
Dot Marking



Advanced  
Automation

**SPEED LASER AND AUTOMATION**



[www.speedlasers.com](http://www.speedlasers.com)

Smart Lasers



SLA is built on a 1.0-acre facility, and since 2020, we have been providing innovative and reliable solutions to various industries across India. We specialize in advanced laser marking machines, dot pin marking machines, and custom automation systems, delivering tailored solutions that meet the unique needs of our clients.

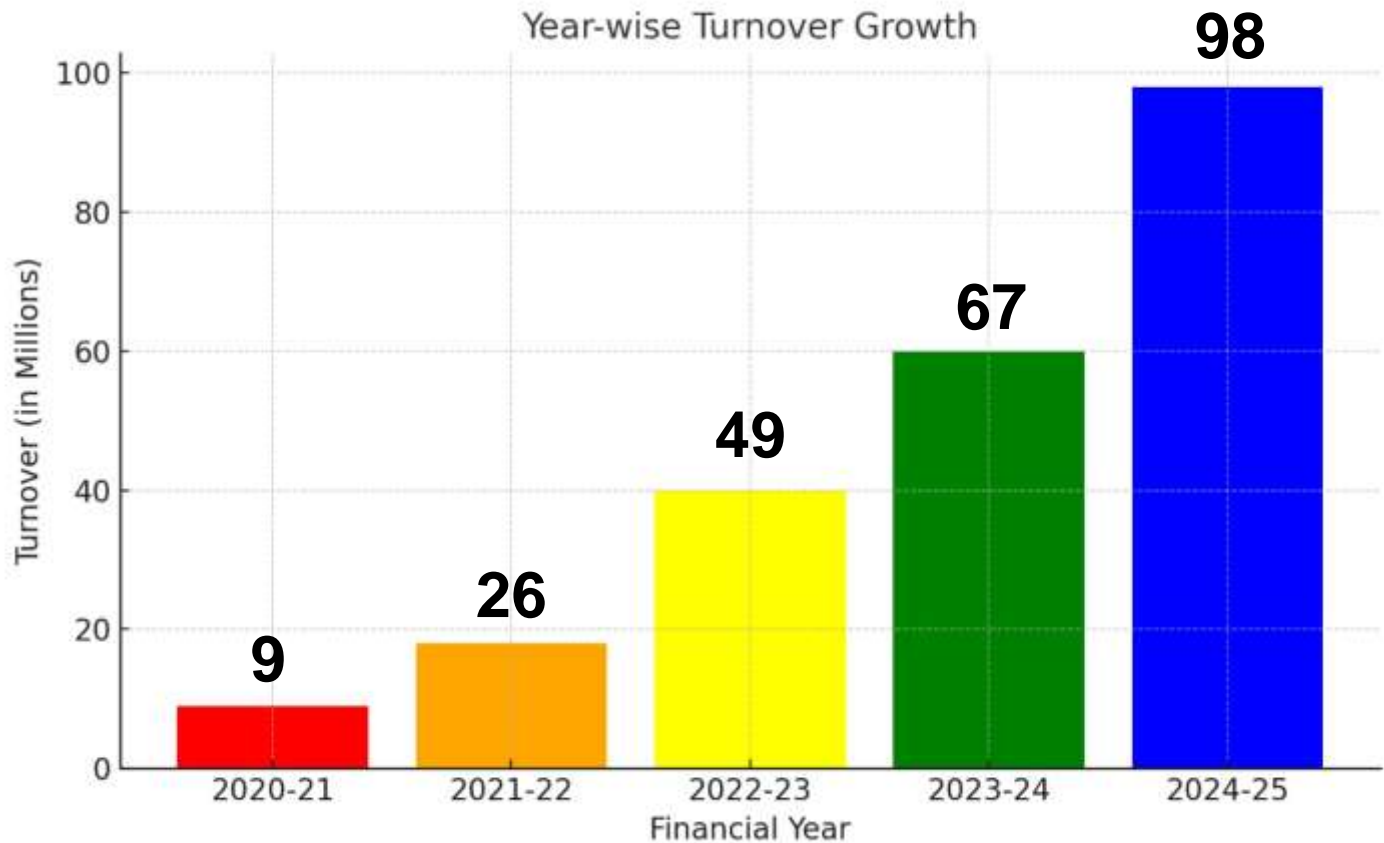


# Why Speed Laser



We operate from a spacious 20,000-square-foot facility equipped with advanced machinery. Our skilled team of programmers and designers ensures exceptional quality in every solution. With well-organized systems and a strong pan-India service and support network, we deliver innovative and reliable solutions to our customers.





From 2020 to 2025, our company has consistently achieved remarkable financial growth. Each year, we have seen a significant increase in our turnover, reflecting our dedication, innovation, and commitment to excellence.





## Our Strengths,

- Extensive experience of 7 years in the field of Laser Marking Automation.
- In-house set up for Design and Development, Mechanical, Electrical and Software.
- Professional process driven approach and complete project management system.
- Successful execution of project in a timely and cost effective manner.
- Delivers 100+ solutions to customers every year.



# Our USP (In House Facilities)

Designing, Machining , LASER Cutting, Fabrication, Assembly, ENP Plant, Programming Team for PLC, Lab-view, Python....

SR. NO.	MACHINING SHOP / FACILITIES	QTY
1	EUMA SPINNER(VMC)	1
2	<b>ROBODRILL(VMC)PALLET CHANGER</b>	2
3	<b>BFW 4TH AXIS (VMC)</b>	1
4	LEAD WELL (VMC)	1
5	<b>TOPPER 4TH AXIS (VMC)</b>	1
6	TOPPER (VMC)	1
7	<b>DOOSAN (CNC)</b>	2
8	<b>ACE HC 400(HMC)</b>	1
9	ENSHU(HMC)	1
10	MILLING MACHINE	2
11	LATHE MACHINE	2
12	JIG BORING (DRO)PACMILL	1



## In House Facilities



This is a 1.5 kW fiber laser cutting machine, capable of cutting a variety of metals such as stainless steel, mild steel, aluminum, and brass. The cutting capacity typically depends on the thickness of the metal, but in this range, it can easily cut metal sheets up to around 10 millimeters.



## In House Facilities



This CNC bending machine from Haco has a width of 3 meters and can bend material thicknesses ranging from 0.5 millimeters to 10 millimeters. It also has a pressing force of 180 tons. Additionally, the machine features an auto-alignment function that automatically corrects the bending angle if any draft or deviation occurs, ensuring precise and accurate bends every time.





## In House Facilities



This Vertical Machining Center (VMC) features travel dimensions of 1000 mm in the X-axis, 1000 mm in the Y-axis, and 500 mm in the Z-axis. It is equipped with a Mitsubishi M80 control system and a 24-tool Automatic Tool Changer (ATC), making it highly efficient and versatile. This machine was acquired one year ago and has been an integral part of our operations.



# Our Competitive edge

- **Engineering Excellence:** Innovation and pioneering in automation design and development processes ensures optimum solution to your automation requirements.
- **Manufacturing Excellence:** Our factory is certified to ISO 9001:2008 to ensure our product qualities are always matching to your expectations.
- **Flexibility:** Fully integrated in-house processes includes R&D, Engineering, Manufacturing & Testing Facilities to your special requirements in automation.



# Our Specializations



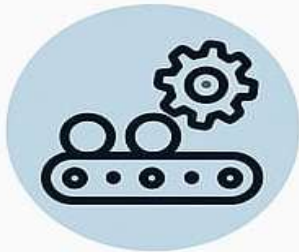
**Laser Marking Machine**



**Dot Pin Marking Machines with SPM**



**Traceability Solutions**



**Customize Conveyor System**





# SLA Smart Laser Marking Controller

Advance Integrated Fiber Lasers



Applications



Features



Advantages



Applications

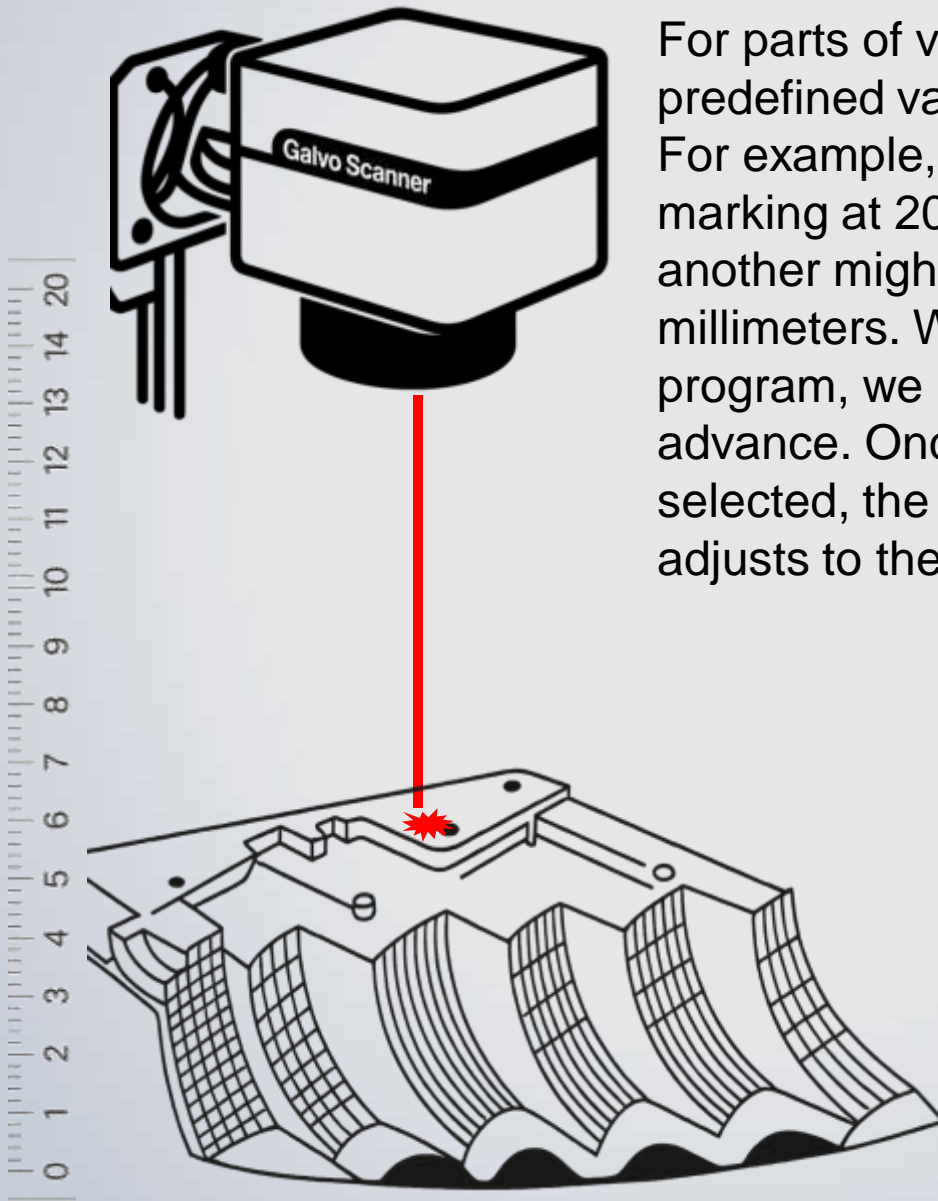


Features



Advantages





Our laser machine features an automatic height adjustment function. For parts of varying heights, we input predefined values into the system. For example, one part might need marking at 200 millimeters, while another might need it at 150 millimeters. When we create the program, we input all these values in advance. Once the specific recipe is selected, the machine automatically adjusts to the



Applications



Features



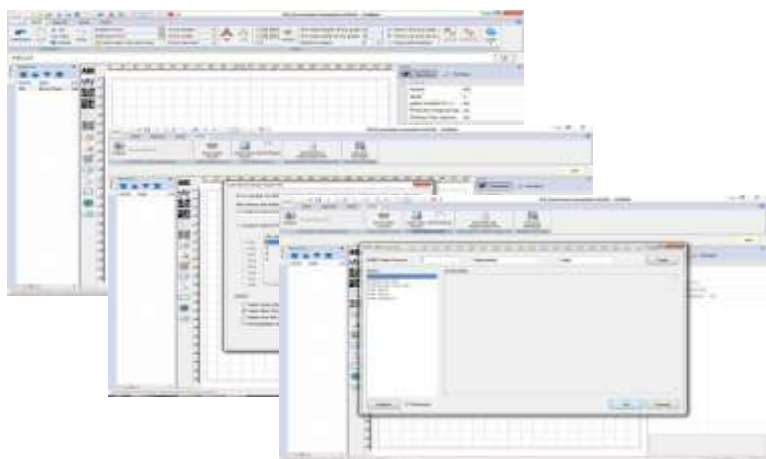
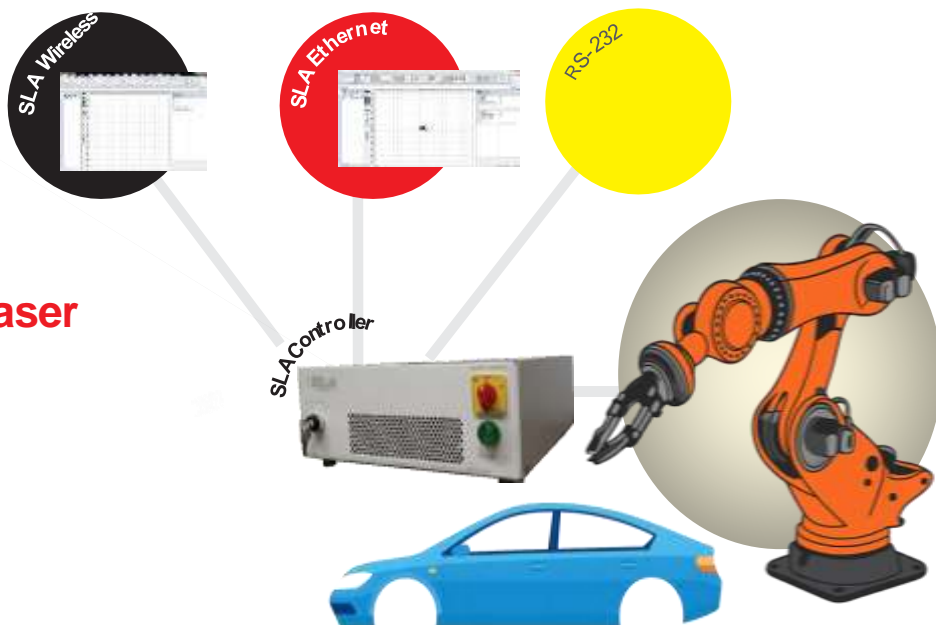
Advantages



## Architecture Options

SLA Integrated Markers are available with both the industry Ethernet Interface and RS232 communication.

### SLA-2025 Controller Base laser

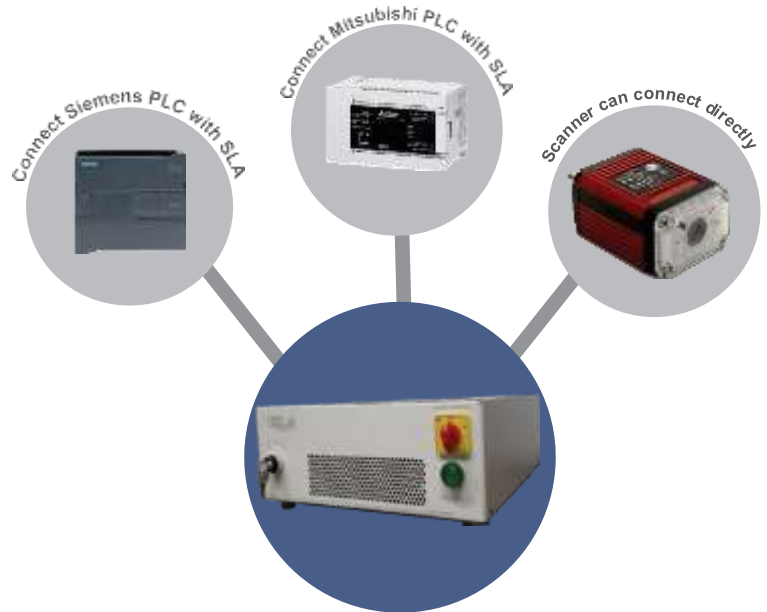


## Controls and Software

SLA Integrated Markers are available with a powerful, yet simple and easy to use marking software as well as an integrated controller which takes full advantage of the capabilities of the Pulsed laser sources.



## Architecture Options



## Controls and Software

### Software Features

Communication type	TCP/IP, WiFi, Rs232.
Data Storage	SQL Data Storage, Excel and .CSV
Double Mark Detection	Mark detection By camera and Scanner
Laser Operation	Offline,Hmi,SCADA,PLC and Computer
Auto Part Program Selection	PLC,RFID and Binary selection.



### 3. Orientation Detection

The machine can detect the orientation of the part, regardless of how it is placed, and adjust the marking accordingly.



### Duplicate Marking Prevention

To avoid duplicate marking, the machine stores marking data for up to one crore parts. If a part has already been marked, the machine will detect it and prevent duplication.



### Three-Layer Password Protection

The machine offers three levels of password protection: one for the operator, one for the manager, and one for the supervisor, ensuring secure access control.



### Advanced Communication Systems

The machine supports various communication protocols, including TCP/IP, Modbus, and Serial communication, allowing seamless integration with other industrial devices.



### Backup and Restore Feature

The machine operates independently without needing a computer. Once the initial setup is done, users can take a backup of all settings. In case of any issues, these settings can be easily restored, minimizing downtime.



The machine ensures that the marking data matches the master format and compares the scanned data to ensure accuracy and consistency.



The machine uses RFID technology to automatically select the correct marking parameters based on the part's height, which is pre-set by the manufacturer.

## Auto Height Adjustment

The machine automatically adjusts its marking height according to the selected part, ensuring precise marking every time.





• Available with industry standard XY2-100 interface



## Specifications

Laser Options	
Laser Power (W)	20 W, 30 W, 50 W, 100 W
Max Pulse Energy (mJ)	1.0
Wavelength (nm)	1064
Pulse Duration (ns)	100
Pulse Repetition Rate (kHz)	2-200
Scan Head	
Tracking Delay (ms)	0.1
Repeatability (rms)	<5 $\mu$ rad
Mirror Clear Aperture (mm)	10
Focal Length Option (mm)	100 163 254 330 420
Mounting Configurations	Horizontal Vertical
Other Parameters	
Control	SLA, XY2-100
Software	SLA Smart-2021



Laser Parameters	
Lens Focal Length (mm)	163
Field Size (mm <sup>2</sup> )	100 x 100
Working Distance (mm)	189
Spot Size ( $\mu$ m)	~ 30

## Speed Laser and Automation

Dhanore MIDC, Alandi\_Markal road  
Pune, Maharashtra - 412105



Contact number: 9960089949



speedlaserspune@gmail.com



www.speedlasers.com



4FS-2FC-T9PJ ( Digipin )





